



SILVA ENGINEERING, LLC

www.silvaengineering.com

**90 Quarry Street, Lower Level
Willimantic, CT 06226**

Consulting Engineers

**Phone: 860.423.4506
Fax: 860.423.1875**

May 17, 2018

Ref: 1814101

Mr. Robert Grasis
Director
Town of Vernon WPCA
P. O. Box 147
Vernon, CT 06066

Email: rgrasis@vernon-ct.gov

Re: Town of Vernon WPCA
Talcotville Pump Station
Emergency Generator Replacement
Floor Working Load Capacity

Dear Mr. Grasis:

Prior to the removal of an existing emergency generator, Silva Engineering, LLC (Silva Engr) was retained by the Town of Vernon to determine the working load capacity of the floor slab within the existing Vernon WPCA Pump Station.

Our services included reviewing existing documentation, performing a site inspection (conducted on May 4, 2018), and preparing load capacity calculations. These calculations included assumed material properties based upon 1968 construction standards, since the available drawings did not include concrete and reinforcing steel strengths.

The attached sketch (SK-01) notes the calculated Floor Working Load Capacity (150 psf), and includes recommendations for Contractor submittals prior to proceeding with the Work.

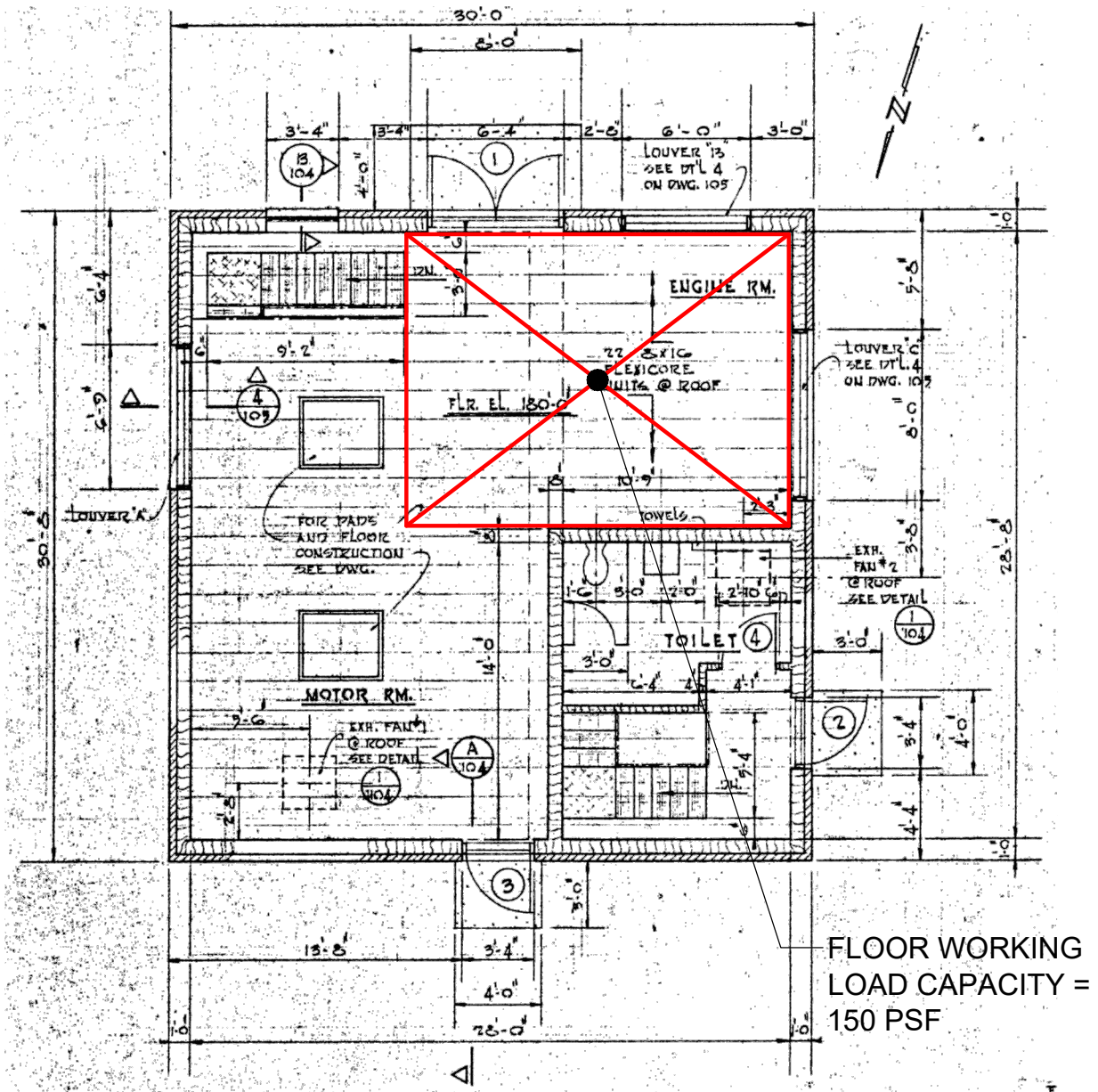
Please contact this office if you have any questions.

Sincerely,

SILVA ENGINEERING, LLC

James L. Silva, P.E.
Principal

Attachment: Sketch SK-01 dated May 17, 2018



NOTES

1. RESTRICT ALL LOADS RELATED TO REMOVAL AND REPLACEMENT OF THE EMERGENCY GENERATOR TO THE AREA OUTLINED IN RED.
2. DO NOT EXCEED INDICATED FLOOR WORKING LOAD CAPACITY.
3. SUBMIT METHOD FOR REMOVAL AND REPLACEMENT OF THE GENERATOR FOR REVIEW PRIOR TO COMMENCING ALL WORK.

TOWN OF VERNON WPCA
TALCOTTVILLE PUMP STATION EMERGENCY GENERATOR REPLACEMENT
CONTRACT # 2028-05/07/2018
FLOOR WORKING LOAD CAPACITY FOR REMOVAL & REPLACEMENT
OF EMERGENCY GENERATOR


SILVA ENGINEERING, LLC
Civil & Structural Engineering Services
90 Quarry Street, Lower Level, Willimantic, CT 06226
Phone: (860) 423-4506 Fax: (860) 423-1875
www.silvaengineering.com

DRAWN BY: JLS

MAY 17, 2018

SKETCH SK-01