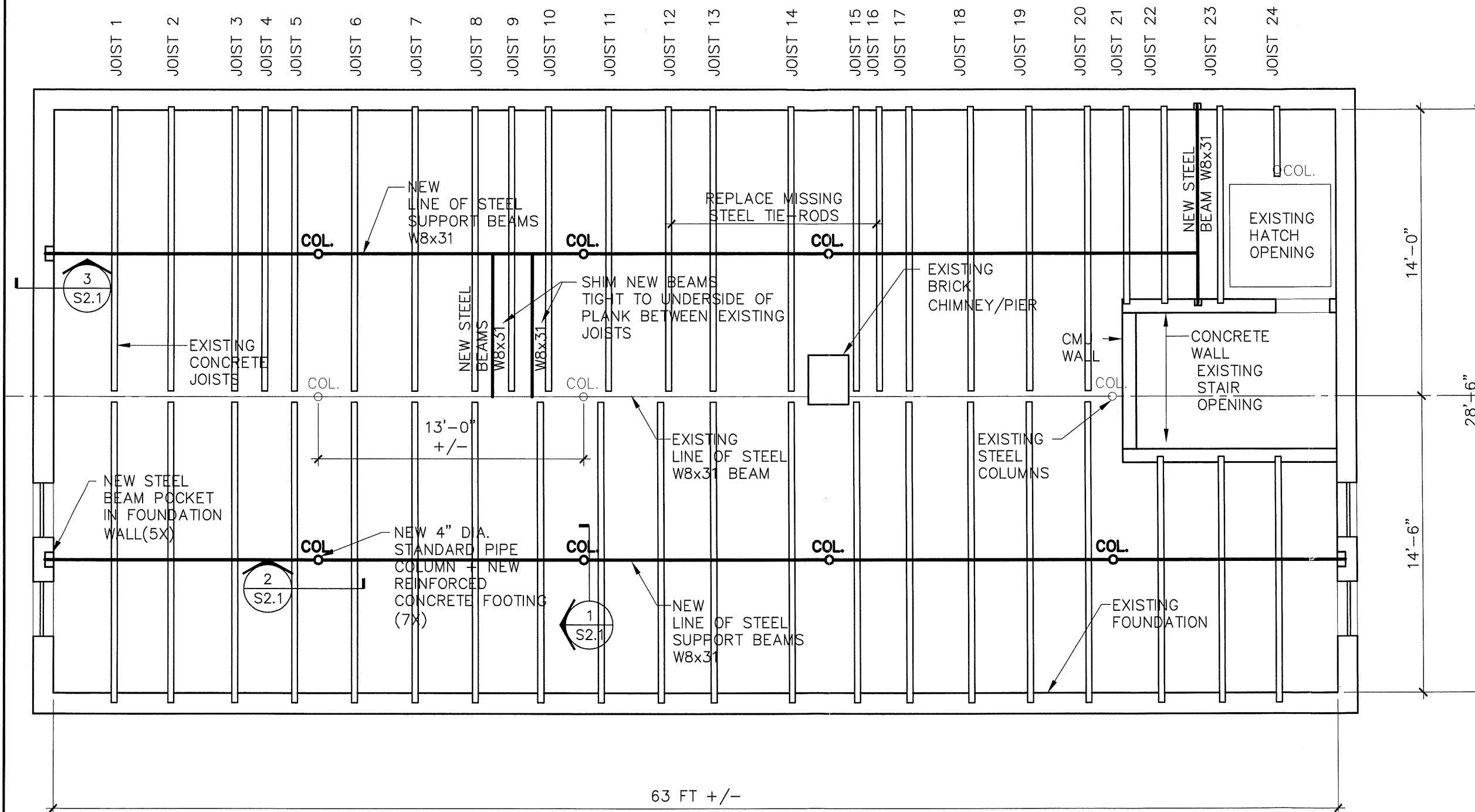


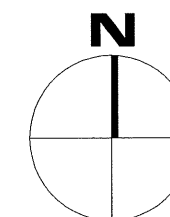
KEYNOTES / GENERAL NOTES:



BASEMENT PLAN WITH FIRST FLOOR FRAMING

SCALE: 3/16"=1'-0"

STEEL FRAMING



STEEL FRAMING PLAN

HENRY PARK
HOROWITZ POOLHOUSE
BUILDING
VERNON, CONNECTICUT

CONTRACT DOCUMENTS PHASE

DATE: 12/07/07
PROJECT: 06109
SCALE: 3/16"=1'-0"
DRAWN BY: GSG/RB
CHECKED BY: DARB

DWG. NO.
S1.1

